

“Strategic Environmental Management in Mount Athos under Climate Change” - LIFE STEMMATHOS (LIFE19 CCA/GR/001185)

LIFE Platform Meeting on Forest Restoration in Europe,
3-5 JUNE,
BRASOV ROMANIA



Strategic Environmental Management in Mount Athos under Climate Change” - LIFE STEMMATHOS (LIFE19 CCA/GR/001185)



PROJECT LOCATIONS:

Mount Athos (Greece)

Le Valat de Solan (France)

BUDGET:

Total amount: 5,713,188 €

EC cofounding rate: 55%

DURATION:

01/10/20 - 31/12/25



PROJECT BENEFICIARIES:

Coordinating Beneficiary:

Holy Community of Mount Athos (GR)

Associated Beneficiaries:

Democritus University of Thrace (GR)

Monastère de Solan (FR)

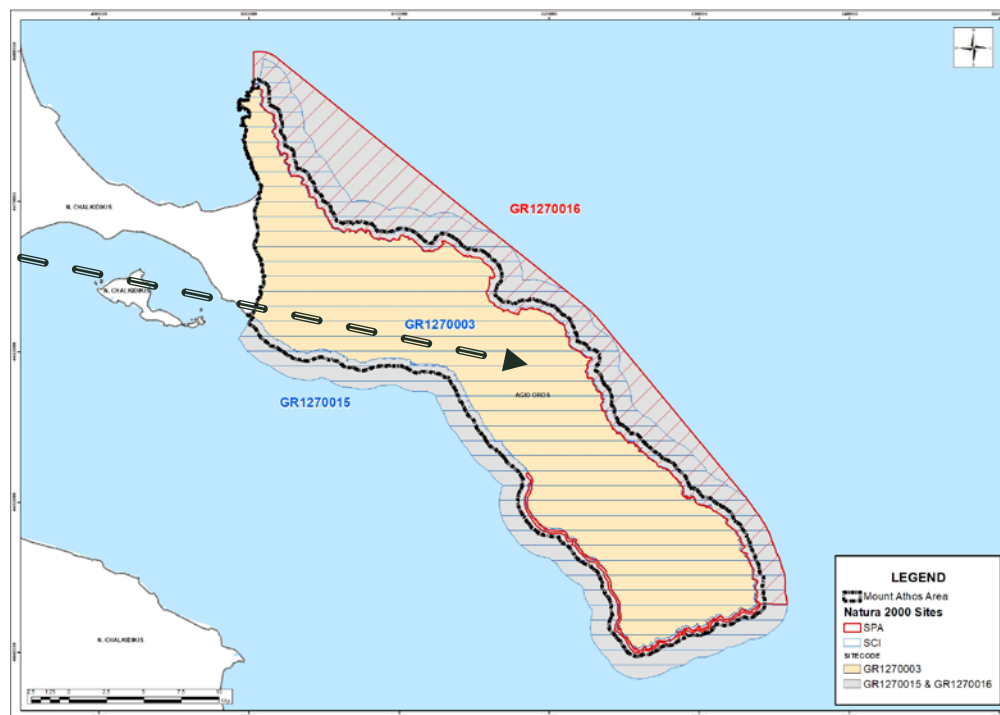
Les Amis de Solan (FR)



Site Location



Mount Athos (Agion Oros in Greek) occupies the peninsula "Athos" neighboring to the Prefecture of Chalkidiki, Central Macedonia Region, Greece



Site Description & Demography



<u>Total area:</u>	33,400ha
<u>Topography:</u>	Mountainous – semi-mountainous
<u>Altitudes:</u>	0 – 2,033m
<u>Forest cover:</u>	> 93.1%
<u>Seashore:</u>	179km
<u>Population:</u>	2021 1746 (-3.6%) 2011 1811
<u>Pop. Density:</u>	5.3/ sq.km.
<u>Ter. Division:</u>	20 Monasteries 16 Scetes Numerus Cells & Huts

Restrictions and Bans with Environmental Dimension



- Access only by boat
- Access to vessels 500m from the seashore
- Professional fishing 500m from the seashore
- Hunting activities in general
- Husbandry activities in general
- Asphalt paving roads construction
- Construction of roads in the lower part of the peninsula

Administrative System



Byzantine period

- 961 Megistis Lavras Monastery Foundation
- 972 A' Typikon Emperor Ioannis Tsimiskis



Ottoman period

- 1593 1st Great Summit of the Holy Community

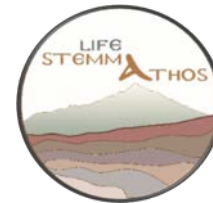


Greek period

- 1926 Mount Athos Constitutional Law



Administrative System



- The **Holy Community** is the Legislative Body of Mount Athos
- 20 monks as Representatives appointed by the monasteries gather in the Community premises in Karyes twice a week (Parliament)
- Decision making of special issues and Regulative acts approval (Laws) 2 times a year in summits of the 20 Representatives (Parliament) + 20 monasteries' Abbots (Senate)
- Regulative acts are the Holy Community decisions ratified by the Ministry of Foreign Affairs & published in the Government's Gazette



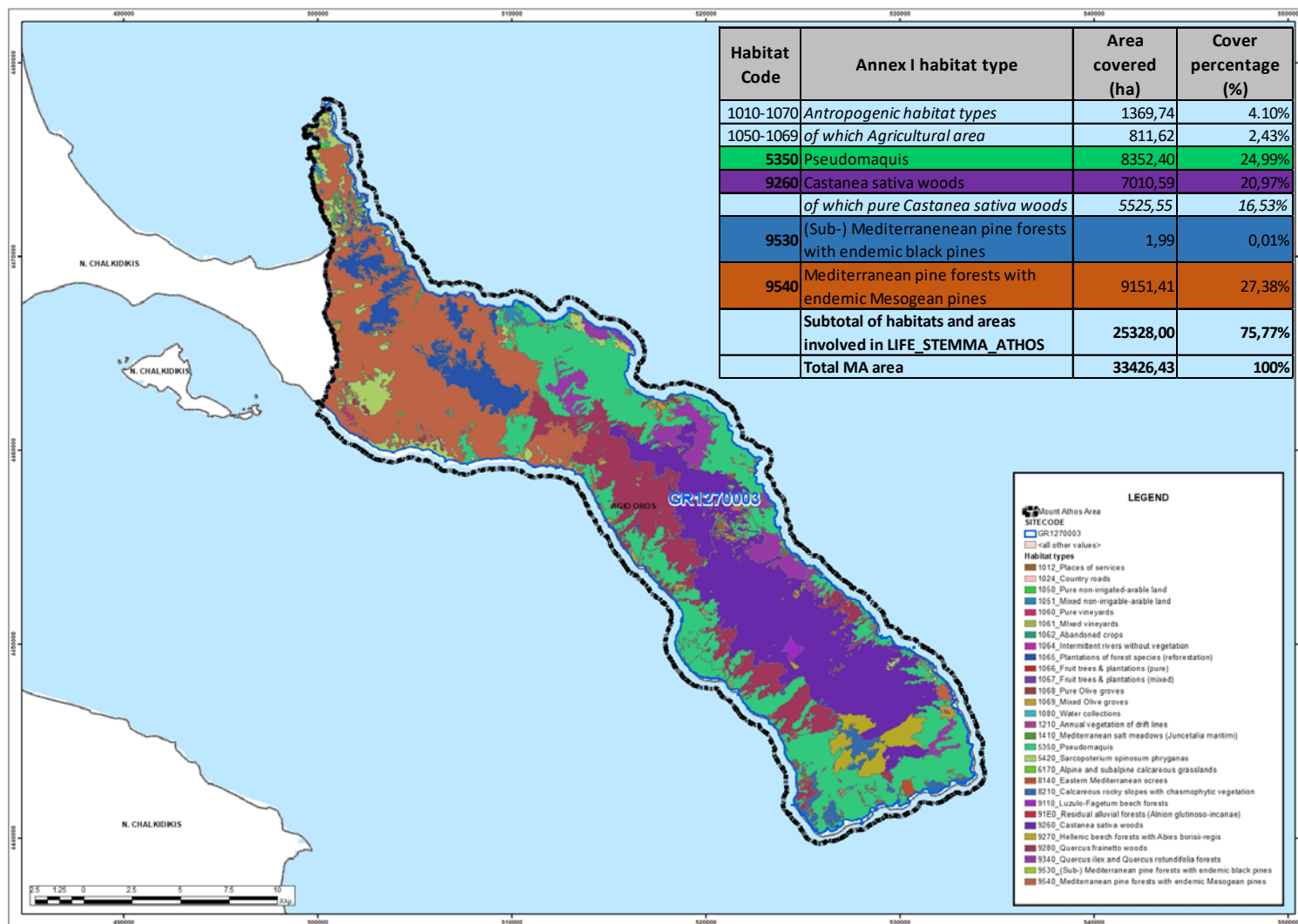
Milestones in environmental protection status



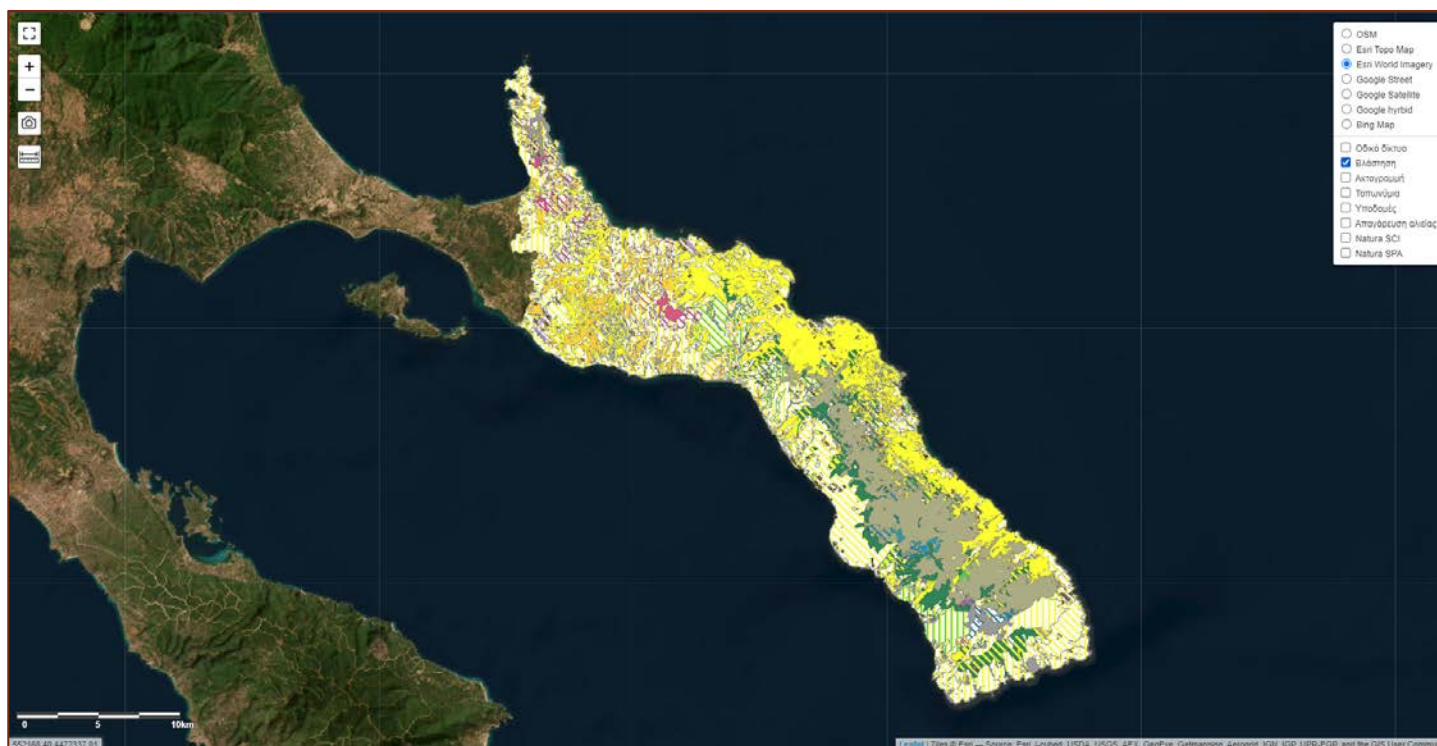
- 1948 Regulative act on agro-security
- 1953 Regulative act on forest management
- 1983 Regulative act on vehicles entrance & forest roads construction
- 1987 Regulation of Ierissos Port (limiting fishing boats & vessels access in MA)
- 1988 Inscription as UNESCO World Heritage Monument
- 1995 Regulative act on forest management (amends 1953 Regulation).
- 1996 Regulative act on hunting prohibition
- 1999 HCMA accepts the invitation to participate in Natura 2000 network
- 2007 Drafting of the 1st Special Environmental Study
- 2017 Establishment of 2 marine N2000 areas for the birds and sea fauna
- 2019 Drafting of the 1st Priority Action Framework for Mount Athos N2000 area
- 2021 Drafting of the 2nd Special Environmental Study (on going)



Habitats in GR1270003 Natura 2000

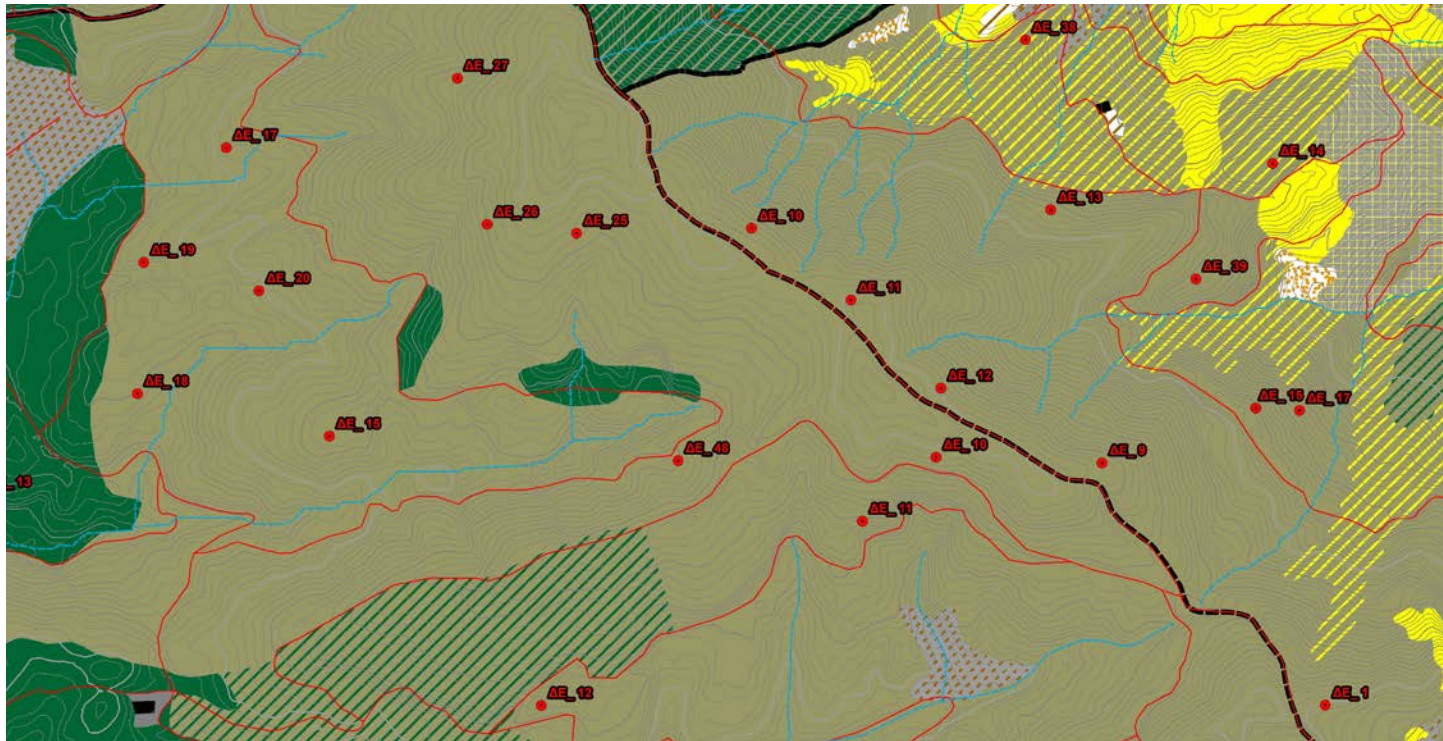


A.1. Strategic Management Plan for Mount Athos



- Collection of the existing environmental datasets for the 20 monastic areas and compilation in a single digital database
- Creating a baseline for CO₂ sequestration for biomass
- Assist the administration in keeping UpToDate environmental data and facilitating the decision-making system in Mount Athos

A.1. Strategic Management Plan for Mount Athos Methodology - Progress



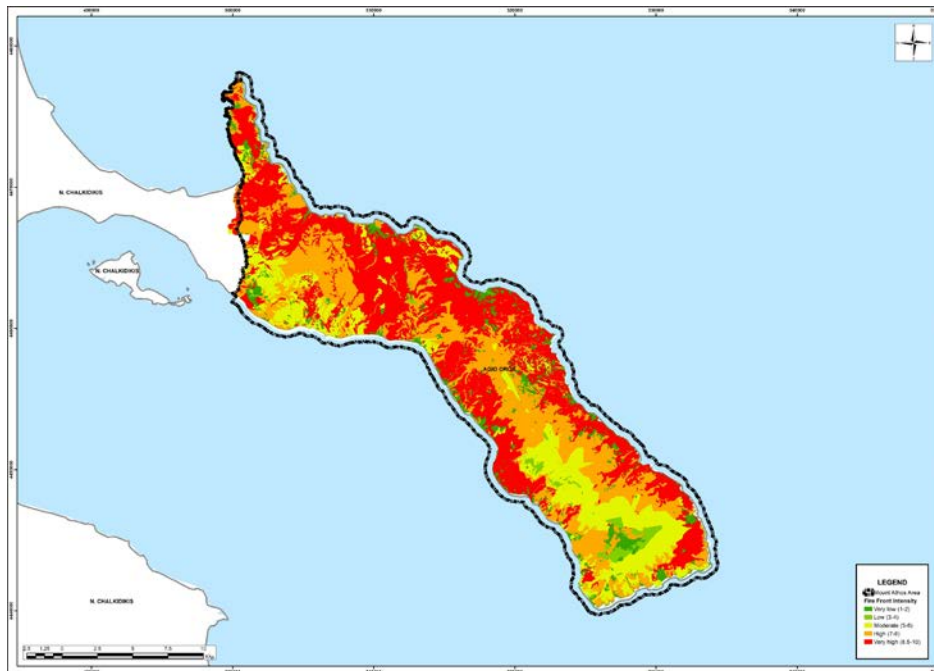
Vegetation Layer Analysis by Polygon

Polygons created:	3,674	Forest stands digitized:	891
Biomass points:	744	Minimum area (m ²):	7.8
Average area (ha):	9.12	Maximum area (ha):	3,639

A.1. Strategic Management Plan for Mount Athos Protection of landscape, preservation of monumental trees

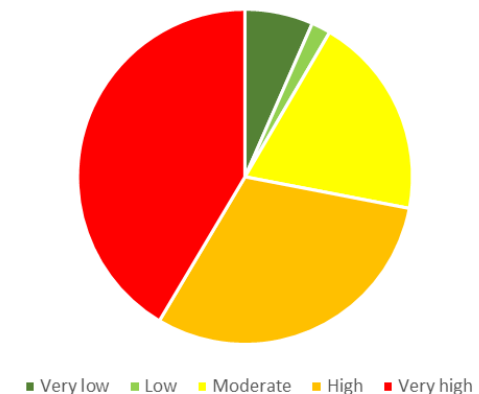


A.1. Strategic Management Plan for Mount Athos Collateral outcomes



Fire Front Intensity		Area (m ²)	Percent	
Very low	1	8.648.635,10	2,58%	6,58%
	2	13.432.212,25	4,01%	
Low	3	6.211.608,19	1,85%	1,85%
	4	2.303,50	0,00%	
Moderate	5	31.840.765,71	9,49%	19,58%
	6	33.815.367,28	10,08%	
High	7	76.971.360,44	22,95%	30,54%
	8	25.428.135,15	7,58%	
Very high	8,5	112.207.343,46	33,46%	41,45%
	9	66.566,01	0,02%	
	10	26.719.816,40	7,97%	

Fire Front Intensity



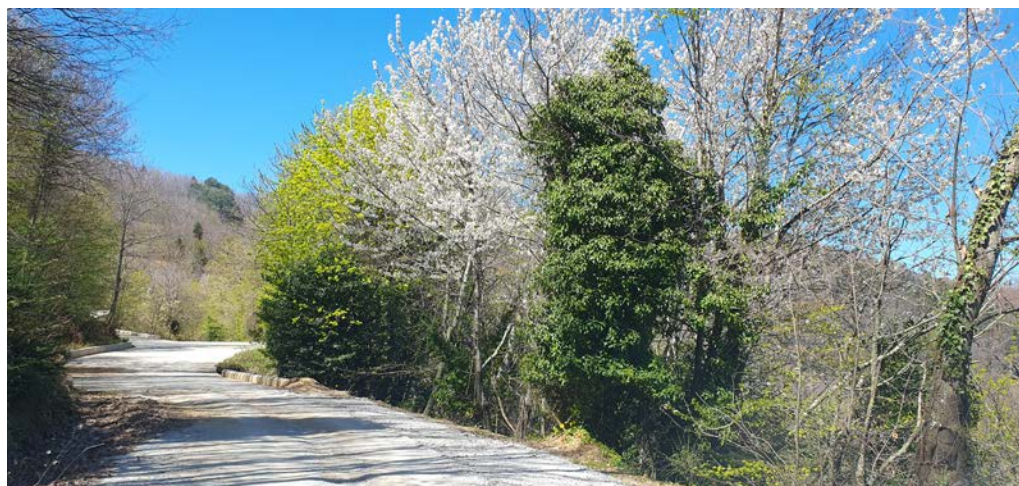
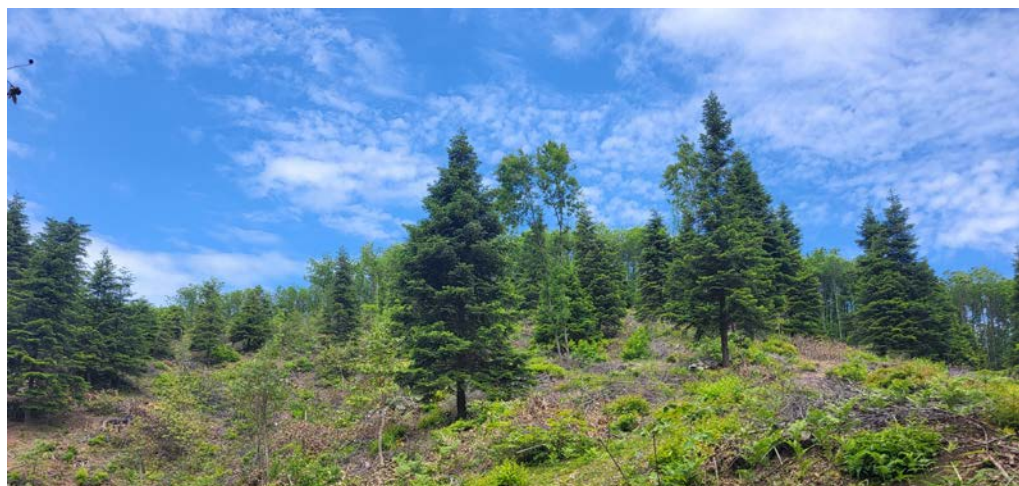
C1: Management of chestnut (*Castanea sativa*) habitats



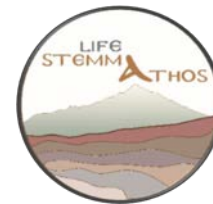
C1: Management of chestnut (*Castanea sativa*) habitats



C.2: Enrichment of pure chestnut (*Castanea sativa*) and oaks (*Quercus spp.*) stands



C.3: Management of aleppo pine (*Pinus halepensis*) habitats



C4 Management of black pine (*Pinus nigra*) habitats



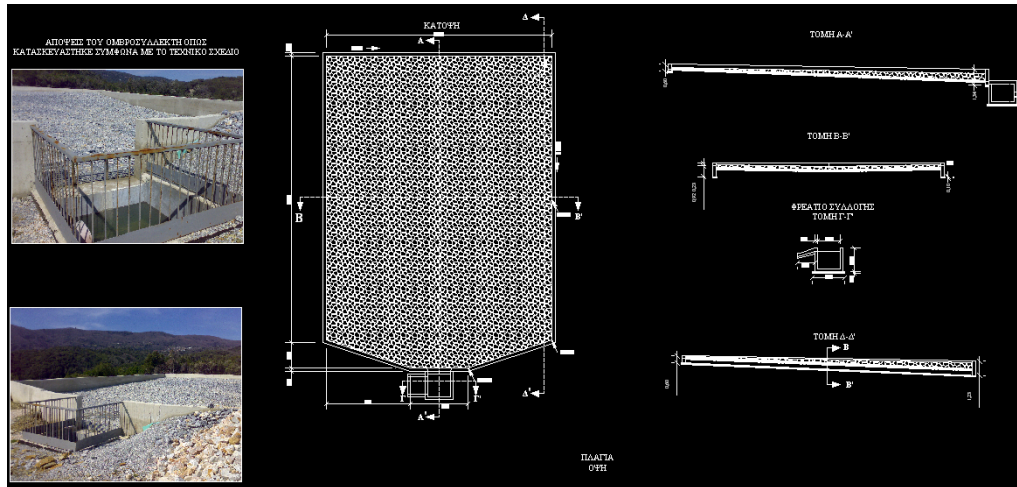
C5: Management of areas with pseudomaquis shrub vegetation



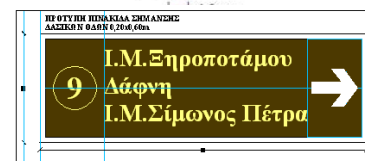
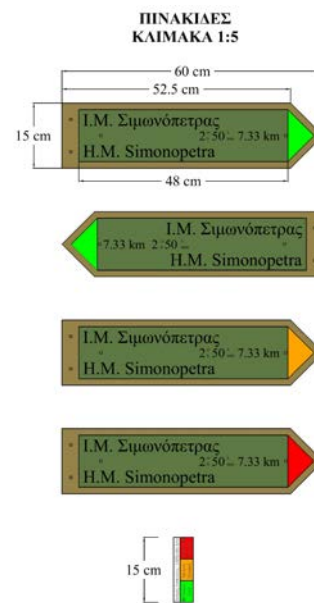
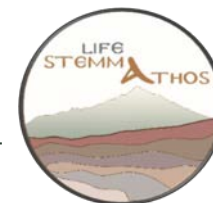
C6: Development of sustainable agroforestry systems



C7 Development of innovative rainwater harvesting systems for multiple uses



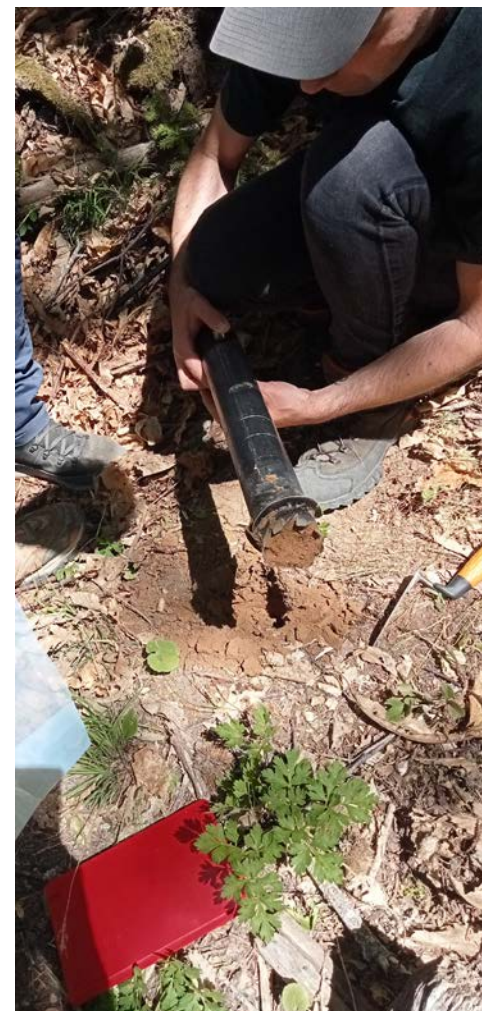
C.8 Development of a common signing system for wildfire protection infrastructure



The entire road network of Mount Athos, including the pathways, has been digitized and integrated into the A1 action map

Road type	Length (m)	Percent (%)
Main Fire Protection Road	52 178.7	3.83%
Main Monastery Connection Road	122 825.9	9.01%
Secondary Road	222 251.3	16.31%
Tertiary Road	768 792.4	56.41%
Pathway	196 890.2	14.45%
Total	1 362 938.4	100.00%

C.9 Development of fuel and carbon stock models

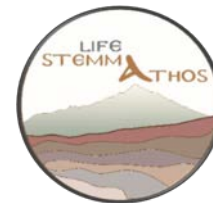


C.10 Development of a strategy for the dissemination of the projects' outputs





European
Commission



“Strategic Environmental Management in Mount Athos under Climate Change” - LIFE STEMMA ATHOS (LIFE19 CCA/GR/001185)



Mulțumesc - Thank you – Σας ευχαριστώ

