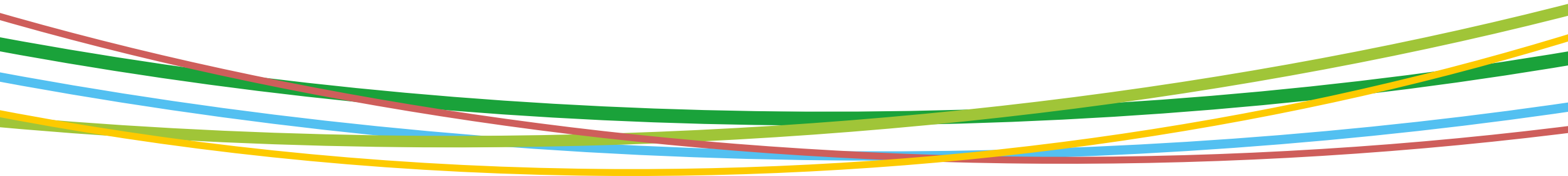




# One Nature project

LIFE PLATFORM MEETING ON FOREST RESTORATION IN EUROPE

Braşov, 3-5 June 2025



# About One Nature Project



- **Officially:** Integrated LIFE project for the Natura 2000 network in the Czech Republic
- **Acronym, number:** LIFE IP: N2K Revisited, LIFE17 IPE/CZ/000005
- **Duration:** 1/2019 to 12/2026
- **Budget:** 20,369,945 €, of which 60 % is funded by LIFE Programme
  
- **Beneficiaries:**
  - [Ministry of the Environment of the Czech Republic](#) (coordinating beneficiary)
  - [Nature Conservation Agency of the Czech Republic](#)
  - [Biology Centre of the CAS, Soil & Water Research Infrastructure](#)
  - [Charles University Environment Centre](#)
  - [Global Change Research Institute of the CAS – CzechGlobe](#)

# The specific outcomes of the Project



**1. Assessment of the status** of protected animal and plant species and of natural habitats at individual sites.



**2. Setting management priorities** for the particular species and natural habitats.



**3. Cooperation** with major **land owners and users**.



**4. Implementation of appropriate conservation measures** to maintain or improve the status of habitats and species.



**5. Introduction** of a **management effectiveness evaluation** at selected sites.



**6. Updating** the **management plans**.



**7. Assessment of the benefits** provided by the protected areas of the Natura 2000 network and of the **costs** associated with conservation efforts in these areas.



**8. Providing expert trainings and examples of good practice** in site management to all nature protection authorities employees.



**9. Effective use of funding resources** available for site management.



**10. Providing the project outputs** to public administration in the form of recommendations for practice.

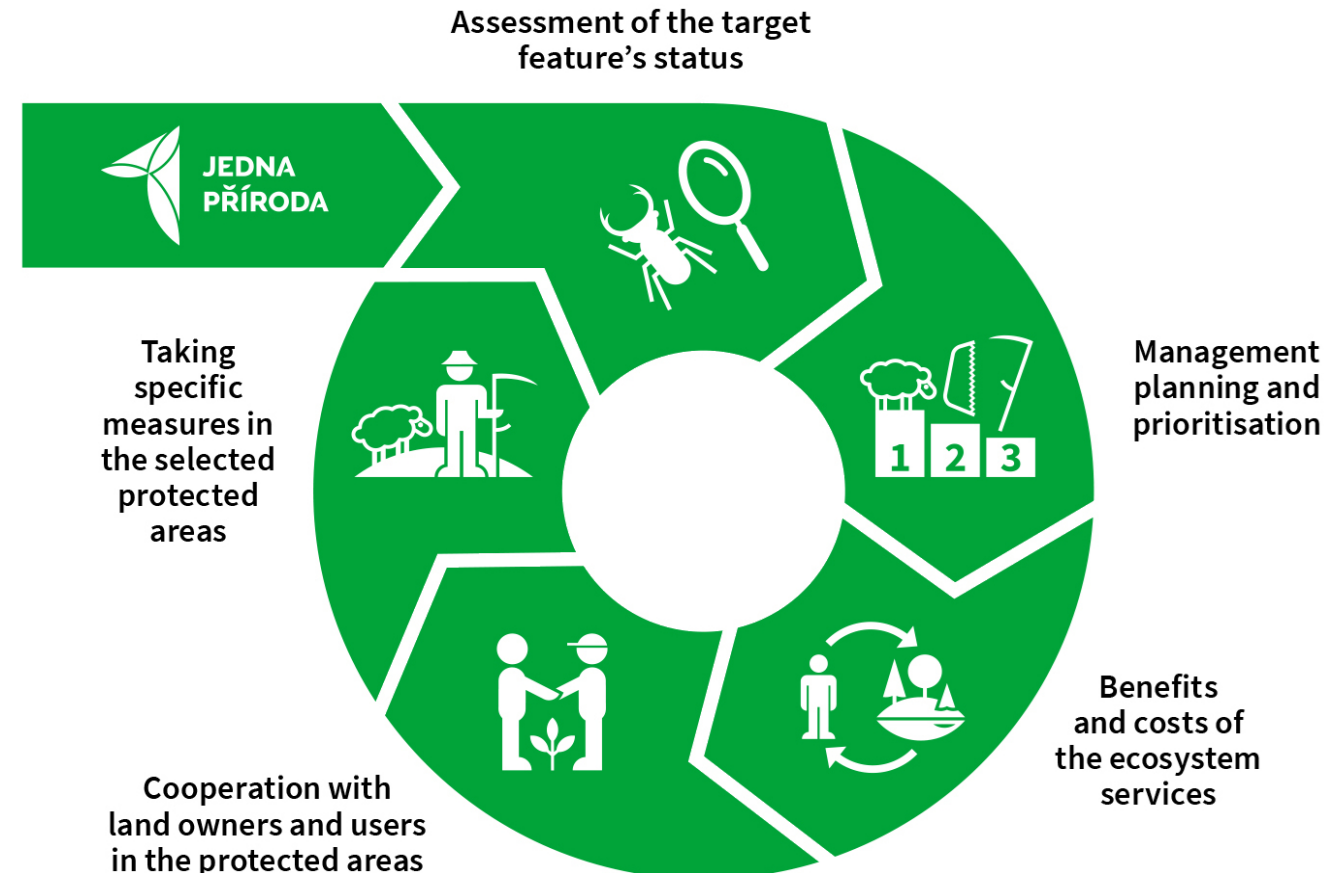


**11. Informing the public** about the objectives and methods of protected area conservation, its benefits and costs.



# Implementation of appropriate conservation measures to maintain or improve the status of habitats and species

- Adaptive management cycle
- Landscape Management Programme (*for most valuable sites, not interesting from agricultural point of view*)





# Action C4 – Management in Natura 2000 sites

- Practical conservation measures within Natura 2000 sites
- Appropriate management interventions
  - Maintenance and restoration of target features (habitats and species)
- Innovative management practices
  - Alternative woodland management - Coppicing with standards and Woodland pasture (silvopasture)



# Alternative woodland management

## Renewal of traditional woodland management:

- Coppicing with standards
- **Woodland pasture (Silvopasture)**

**Implementation** and **evaluation** of management at selected locations

## In collaboration with experts:

**Assessment of the baseline** and **monitoring**

Assessment of the impact of management on **target species and biodiversity**

Documentation for the proposal for **legislative amendments**



# Alternative woodland management – Woodland pasture

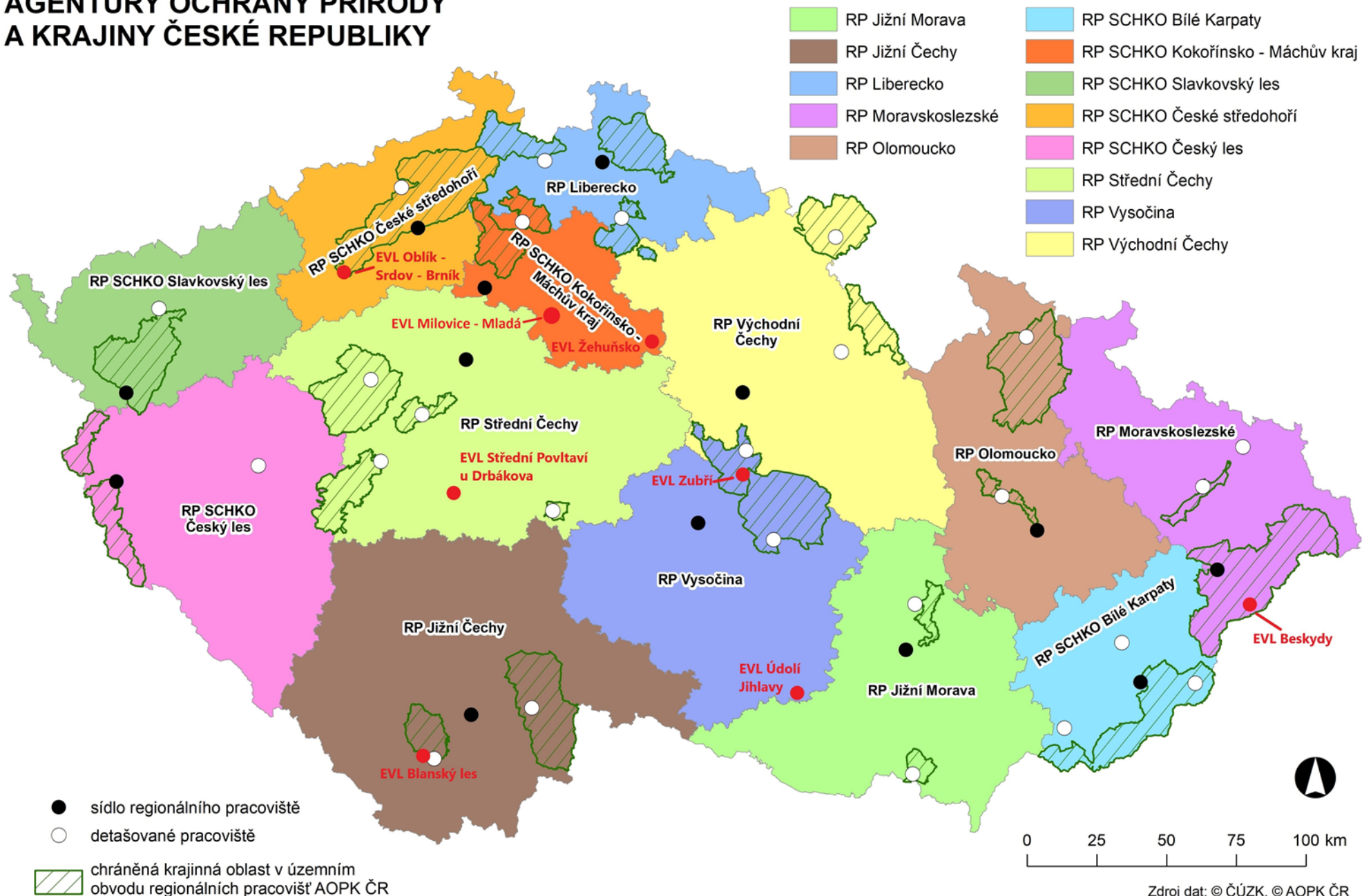


Woodland pasture					
SAC	Location	Target features	Number of experimental plots	Total area (ha)	Year (first)
CZ0614134 Údolí Jihlavy	NPR Mohelenská hadcová step	9170; 91I0; <i>Callimorpha quadripunctaria</i>	1	2	3Q 2023
CZ0424039 Oblík - Srdov - Brník	Brník	<i>Callimorpha quadripunctaria</i>	1	2,4	2Q 2022
CZ0314124 Blanský les	NPR Vyšenské kopce	91U0; <i>Callimorpha quadripunctaria</i>	1	2,5	3Q 2023
CZ0210053 Střední Povltaví u Drbákova	NPR Drbákov - Albertovy skály	9170	2	2	2Q 2023
CZ0214006 Milovice - Mladá	NPP Mladá	4030	1	2	3Q 2024
CZ0214050 Žehuňsko	NPR Knežičky	91I0*; <i>Lucanus cervus</i>	4	8	3Q 2023
CZ0530504 Zubří	PR Zubří	6230*	1	0,5	2Q 2023
CZ0724089 Beskydy	Tisňavy - Biechava	6510	2	2	3Q 2023



# REGIONÁLNÍ PRACOVISŤE AGENTURY OCHRANY PŘÍRODY A KRAJINY ČESKÉ REPUBLIKY

## Regionální pracoviště









# SAC Oblík – Srdov – Brník 2021





# SAC Oblík – Srdov – Brník 2022





# SAC Oblík – Srdov – Brník 2023









# SAC Blanský les (Vyšenské kopce)





# SAC Střední Povltaví u Drbákova





# SAC Zubří





# SAC Žehuňsko





# SAC Údolí Jihlavy





# SAC Beskydy (Malé Karlovice)





# Complications

- **Legislation**

- Only permitted in special-purpose forests (nature conservation)
- Official permit issued by State Forestry administration; often takes up to one year to obtain

- **Difficulties**

- Risk of falling trees leading to injuries of livestock and shepherds
- Deaths of animals (livestock loss due to sudden change in diet composition)
- Absence of dead wood for saproxylic insect and fungi



# Benefits

- Better planning in nature conservation
- Occurrence of rare species in management areas
- Acceptance of the alternative woodland management practices by professional public
- Opening a discussion about changing the forest law

## Woodland pasture in SAC Blanský les - video

- [https://www.youtube.com/watch?v=XmVHJi\\_vaSc](https://www.youtube.com/watch?v=XmVHJi_vaSc)



# Thank you for your attention!

[www.jednapriroda.cz/en](http://www.jednapriroda.cz/en)    JednaPřiroda

**Michal Pánek**

Nature Conservation Agency of the CR

[michal.panek@aopk.gov.cz](mailto:michal.panek@aopk.gov.cz)

**Zdena Koberová**

Nature Conservation Agency of the CR

[zdena.koberova@aopk.gov.cz](mailto:zdena.koberova@aopk.gov.cz)

