

FOREST AND CLIMATE CHANGE

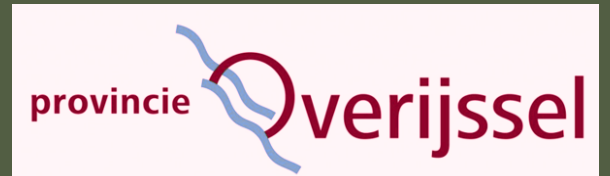
ENHANCING THE RESILIENCE OF FOREST ECOSYSTEMS TO CLIMATE CHANGE, DROUGHT, STORMS, AND FOREST FIRE RISKS IN THE PROVINCE OVERIJSEL (THE NETHERLANDS)

WHO WE ARE

1.



PROVINCE OVERIJSEL



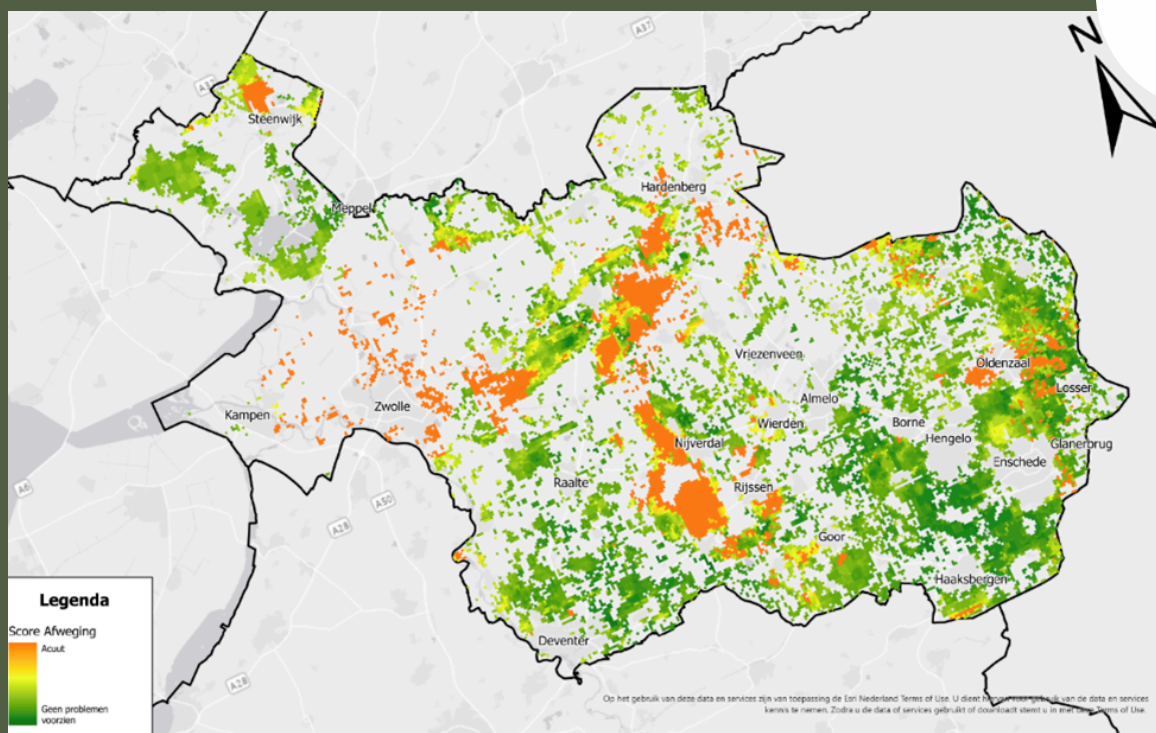
- Located at the eastside of The Netherlands on the border with Germany (Niedersachsen and Nordrhein-Westfalen).
- 37.000 hectares of Forest (app. 10%).
- Ownership situation:
 - 62 % Private property
 - 19 % Staatsbosbeheer (State Forestry Service)
 - 7 % Government
 - 6 % Natuurmonumenten (nature conservation org.)
 - 5 % Landschap Overijssel (nature conservation org.)
 - 1 % Water extraction company

OUR FOREST VITALITY

2.



RESEARCH FOREST VITALITY



- 20.500 hectares (56,5%) situated at high (dry) sandy soils (orange color).
 - In particular monoculture of Scots pine, Norway spruce, larch, and common oak.
 - Urgent threats consist of too limited species composition, acidification, limited age structure, and poor water conditions.

WHAT WE ARE WORKING ON

3.



CLIMATE SMART FOREST MANAGEMENT



- Sponsorship and participating LIFE Climate Forest with focus on:
 - more variety in species and origins
 - a better structure/layering and differentiation in age
 - a well-functioning and more nutritious soil
 - successful regeneration
 - protect the young saplings and shrubs against damage caused by wild animals
 - creating a nature network which contributes to more biodiversity
 - attention for carbon sequestration
 - tree-oriented management
- Subsidizing for planting of new forests on agricultural land.
- Facilitating research and knowledge.

WHAT ELSE DO WE WANT TO DO?

4.



LOOKING FOR COLLABORATION AND FUNDING



- **Funding for continuing knowledge of LIFE Climate Forest.**
 - Specifically focused on knowledge of forest soils and water.
- **Sharing knowledge - and collaborating with partners - to achieve water retention in forests on high dry sandy soils.**
 - Together with partners looking for funds to conduct research on this.
 - The practical implementation of the research on different forest sites and to learn
 - Share knowledge.